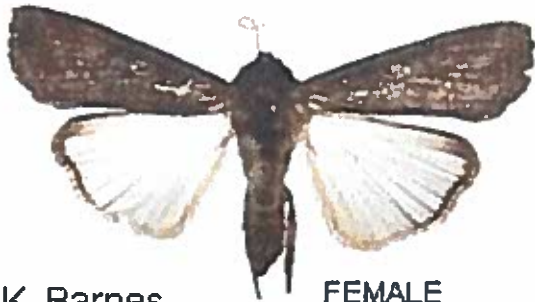


# FALL ARMYWORMS

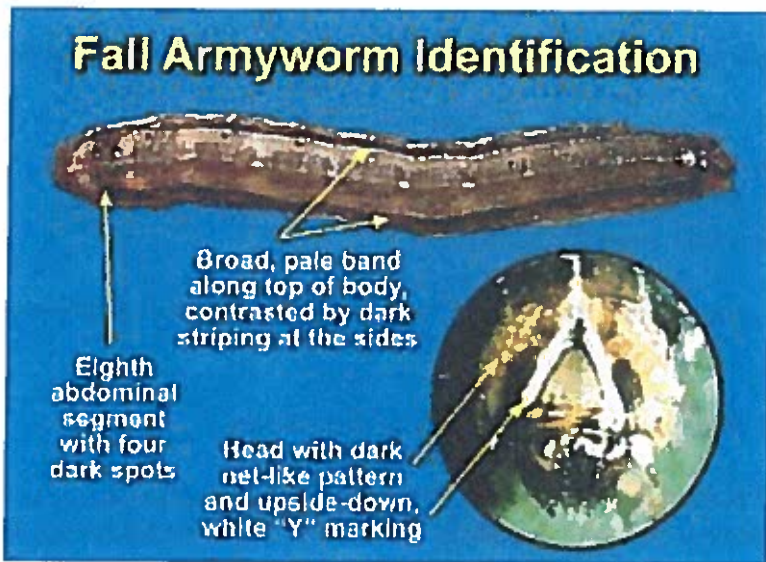
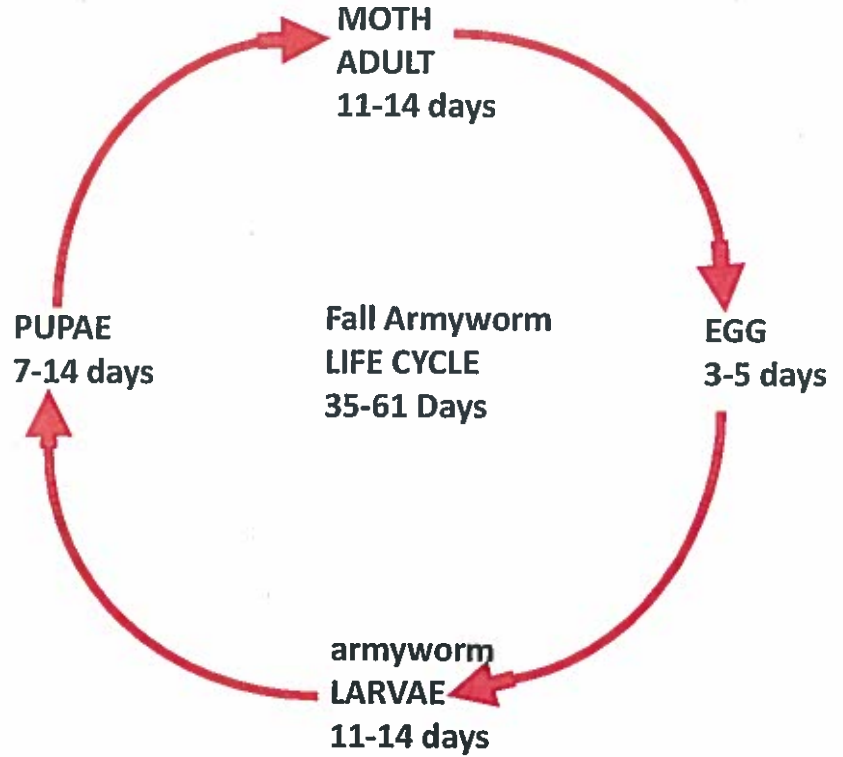


MALE



FEMALE

J. K. Barnes



Armyworm		
Instar	Head Capsule	Body Length (min/max. range in millimeters)
1	1	2-4
2	2	3-6
3	3	5-10
4	4	11-15
5	5	14-20
6	6	24-35

## **Insecticides Labeled for Armyworm Control in Pastures and Hayfields.**

Always read and follow all label instructions on pesticide use and restrictions. Information below is provided for educational purposes only. Read current label before use.

**Karate Z.** 13.1% lambda cyhalothrin. Fall armyworm and grasshoppers. Pasture and rangeland grass, grass grown for hay and silage and grass grown for seed. Pasture and rangeland grass may be used for used for grazing or cut for forage 0 days after application. Do not cut grass to be dried and harvested for hay until 7 days after the last application. Restricted use insecticide.

**Lambda-Cy.** 11.4% lambda cyhalothrin. Fall armyworm and grasshoppers. Pasture and rangeland grass, grass grown for hay and silage and grass grown for seed. Pasture and rangeland grass may be used for used for grazing or cut for forage 0 days after application. Do not cut grass to be dried and harvested for hay until 7 days after the last application. Restricted use insecticide.

**Mustang Max.** 9.6% zeta-cypermethrin. Fall armyworm and grasshoppers. Applications may be made up to 0 days for forage and hay, 7 days for straw and seed screenings. Restricted use insecticide.

**Tombstone Helios.** 25% cyfluthrin. Fall armyworm and grasshoppers. Pasture, rangeland, grass grown for hay and seed. Zero days to grazing or harvesting hay. Restricted use insecticide.

**Warrior II.** 22.8% lambda cyhalothrin. Fall armyworm and grasshoppers. Pasture and rangeland grass, grass grown for hay and silage and grass grown for seed. Pasture and rangeland grass may be used for used for grazing or cut for forage 0 days after application. Do not cut grass to be dried and harvested for hay until 7 days after the last application. Restricted use insecticide.

**Baythroid XL.** 12.07% cyfluthrin. Fall armyworm and grasshoppers. Pasture, rangeland, grass grown for hay and seed. Zero days to grazing or harvesting hay. Restricted use insecticide.

**Dimilin 2L.** 22% diflubenzuron. Fall armyworm and immature grasshoppers. Dimilin must be applied before armyworm larvae reach ½ inch or larger. Provides residual control for up to 2-3 weeks, as long as forage is not removed from the field. Label does not list a restriction on grazing.

**Prevathon.** 5% chlorantraniliprole. Fall armyworm and grasshoppers. Prevathon has a 0 day waiting period for harvest or grazing and is not a restricted use insecticide.

**Besiege.** 9.26% chlorantraniliprole and 4.63% lambda cyhalothrin. Fall armyworm and grasshoppers. Pasture and rangeland grass may be used for grazing or cut for forage 0 days after application. Do not cut grass to be dried and harvested for hay until 7 days after the last application. Restricted use insecticide.

**Sevin 4F, Sevin XLR, Sevin 80S, Generic Carbaryl.** Fall armyworm and grasshoppers. When applied to pastures, there is a 14 day waiting period before grazing or harvesting.

**Malathion 57% and Malathion ULV.** Fall armyworm and grasshoppers. Zero days to harvest or grazing.

**Intrepid 2F.** Fall armyworm (not grasshoppers). Begin applications when first signs of armyworm feedings appear. Use higher rates for heavier infestations. Do not harvest hay within 7 days of application. No pre-harvest interval for forage. 0 days to grazing.

**Tracer.** Treat when armyworm eggs hatch or when larvae are small. Use higher rates for larger larvae. Do not graze until spray is dry. Do not harvest hay or fodder for 3 days after treatment. Do not allow cattle to graze until spray has dried.